

PROPOSED NEW PATHWAY LIGHTING POLE (PP)

ONE OFF URBAN LIGHTING – ITALO 1 OF2 STA 3.5–2M

CONFIRM LIGHT RATING AND POLE COLOUR PRIOR TO ORDER.

POLE HEIGHT 4m

ORIENTATION TO BE PERPENDICULAR TO THE PATHWAY

CONFIRM SETBACK FROM THE PATHWAY PRIOR TO FOOTING INSTALLATION.

EACH POLE TO BE PROVIDED WITH AN OAK-1000P-10W SURGE SUPPRESSOR

CONFIRM POLE TO RENDER IF RAGBOLTS ARE TO BE CONCEALED UNDERGROUND OR SURFACE MOUNTED. REFER TO THE SPECIFICATION FOR DETAILS.

SURFACE PLAG BOLT ASSEMBLIES SHALL BE PROVIDED WITH A 100mm PLUNH.

RAG BOLT ASSEMBLIES SHALL COLOUR MATCH THE POLE INCLUDING THE NUT WHICH IS TO BE SPOT WELDED TO THE TOP OF THE RAGBOLT.

B1

AEC MOD2 BOLLARD OF2H1 SDS 4.3–1M SAT 11WATT 1050 LUMENS

NEW 22M LIGHTING POLE
3 OFF – GERARD RAPTOR NB

NEW 22M LIGHTING POLE
3 OFF – GERARD RAPTOR NB

NEW 22M LIGHTING POLE
4 OFF – GERARD RAPTOR NB

NEW 22M LIGHTING POLE
3 OFF – GERARD RAPTOR NB

(N)

EXISTING NETWORK OVERHEAD SERVICE

LIGHTS

POLE MOUNTED LIGHT FITTINGS

NEW PULLING PIT AS REQUIRED

LIGHTING SWITCHBOARD.

100A

CIRCUIT BREAKER

nA

CIRCUIT BREAKER
CURRENT RATING DETERMINED BY LOAD

FUSE

R1

RELAY COIL

C2

CONTACTOR COIL

3 PHASE

MANUAL KEYED BYPASS SWITCH

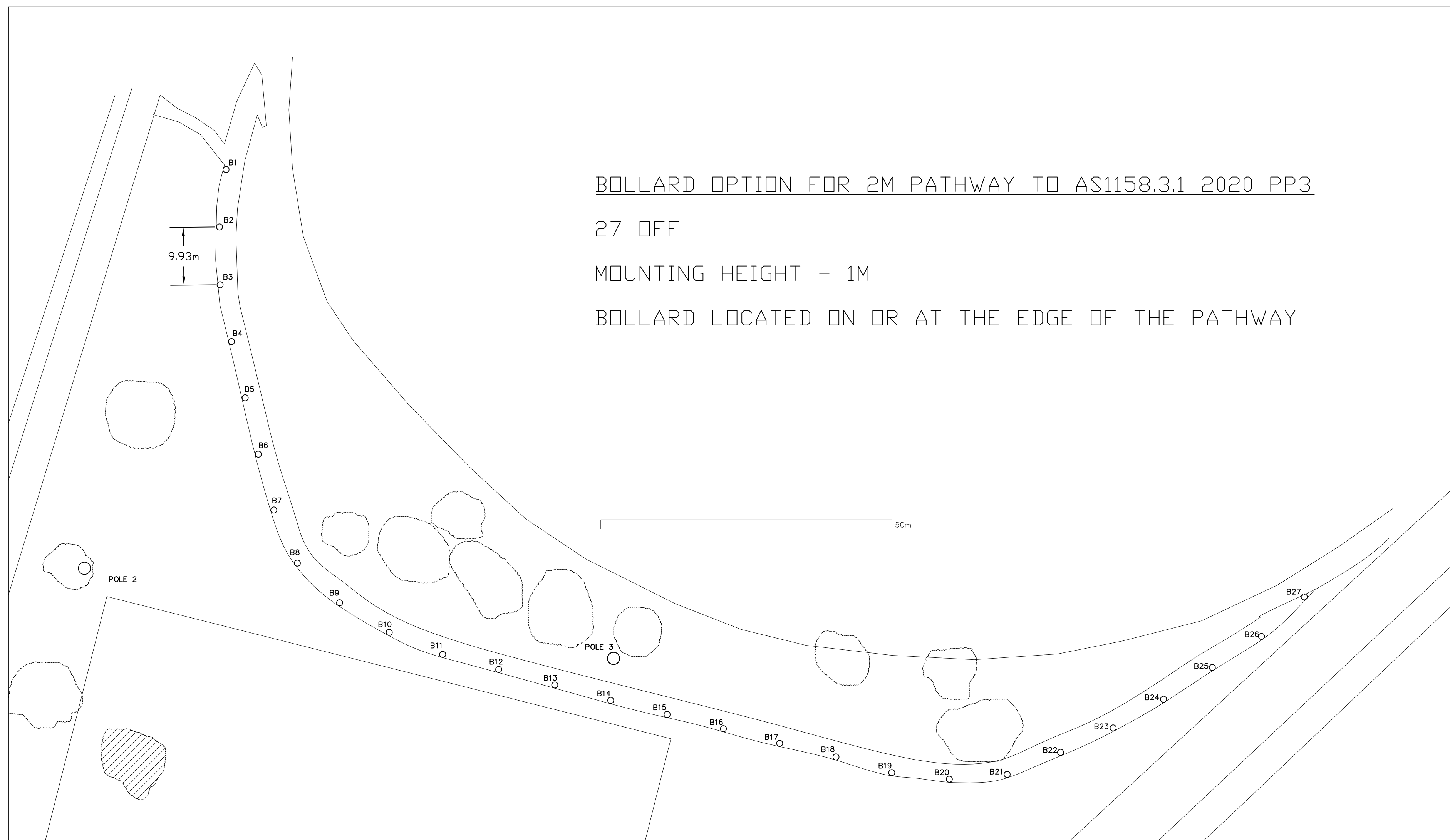
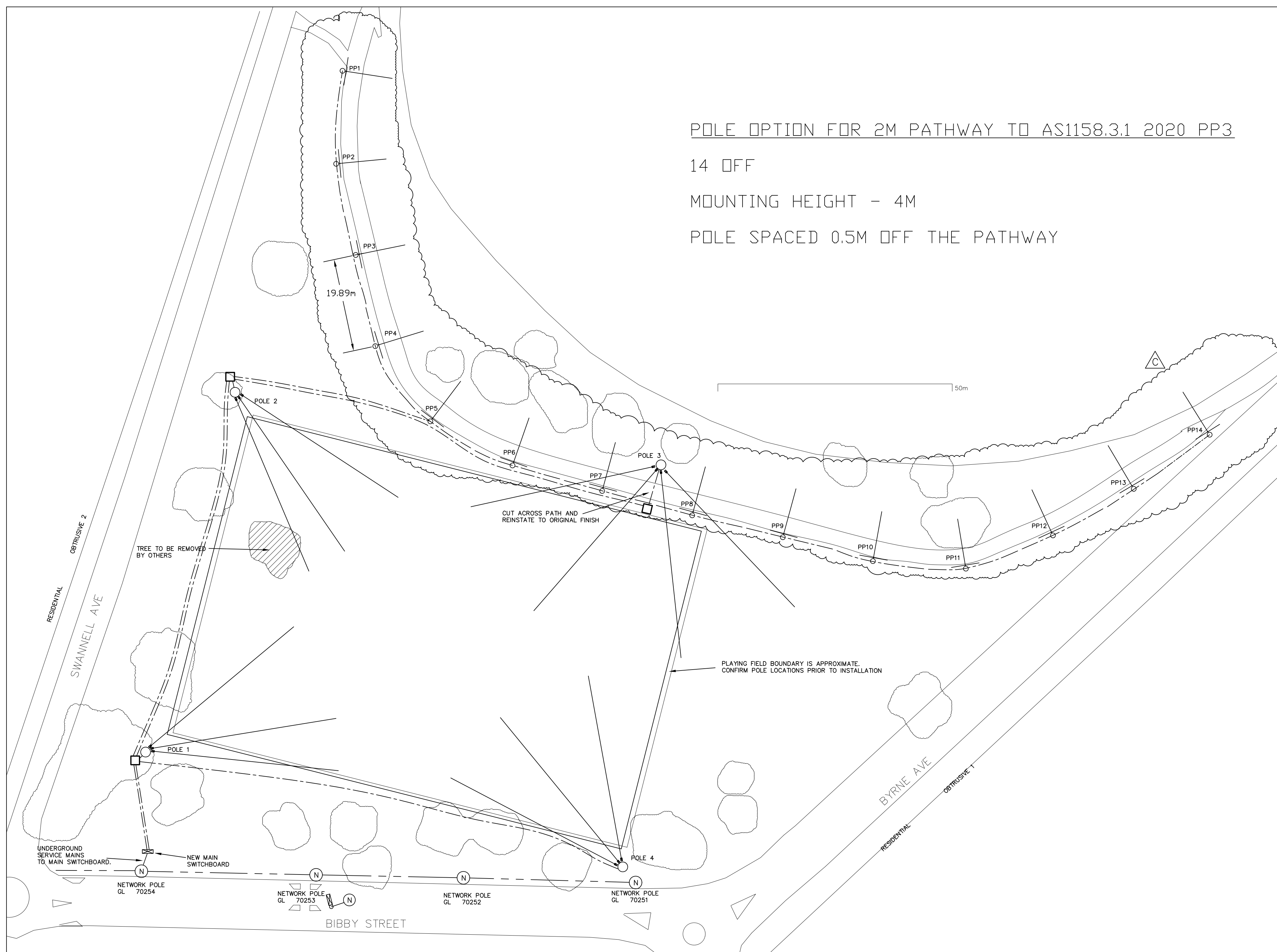
NORMALLY OPEN CONTACTS

NORMALLY CLOSED CONTACTS

SS

SURGE SUPPRESSION – MINIMUM 100KA

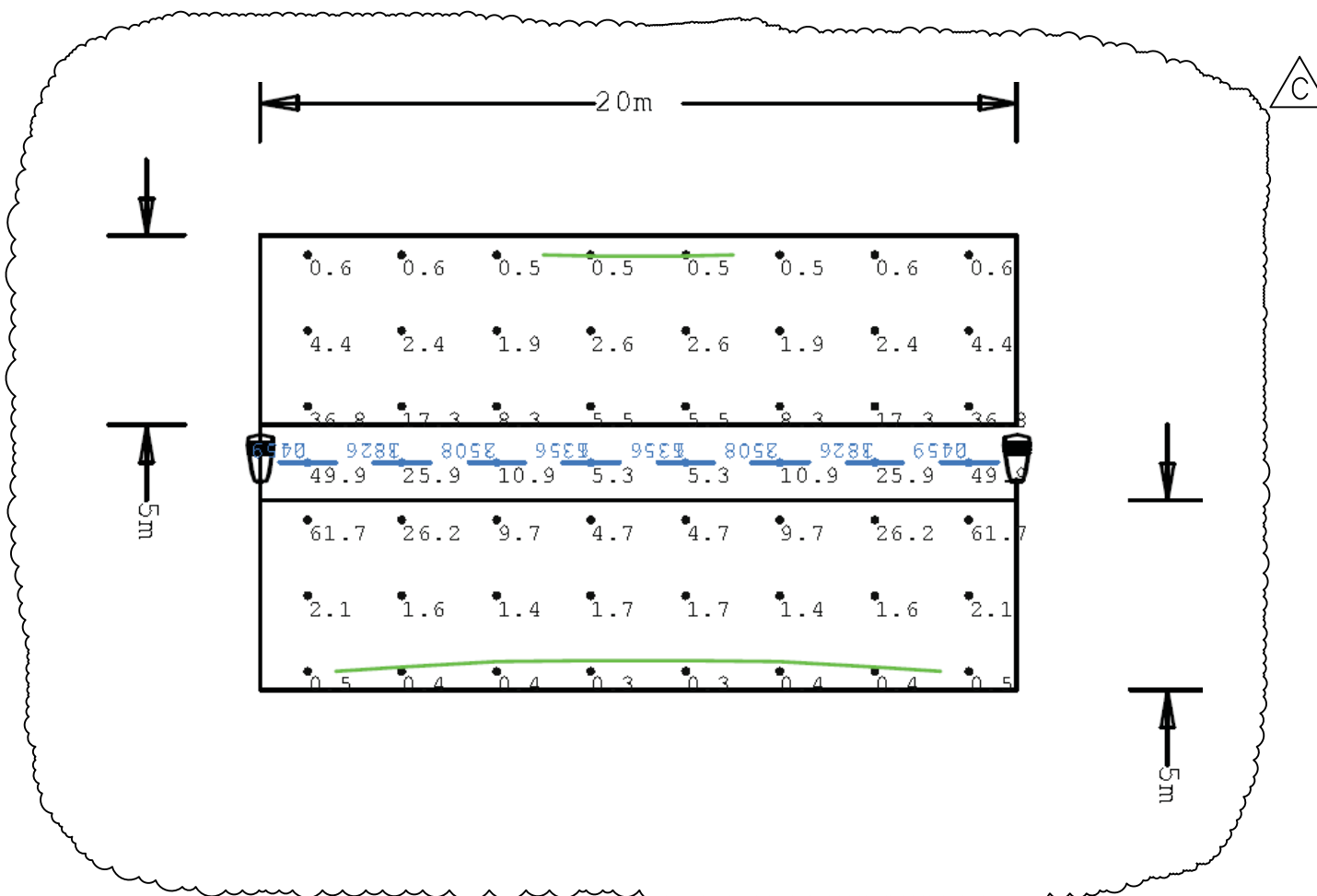
- SEAL ALL NEW CONDUITS THAT ENTER SWITCHBOARDS/PITS WITH EXPANDING FOAM ON COMPLETION.
- CONDUIT ROUTES SHOWN ARE INDICATIVE ONLY.
 - CONFIRM CONDUIT ROUTES WITH COUNCIL PRIOR TO INSTALLATION.
- PROVIDE FAULT LEVEL PROTECTION TO CODE AND LOCAL AUTHORITY REQUIREMENTS.
- CONFIRM LOCATION OF EXISTING SERVICES ON SITE.
- CONFIRM ALL DIMENSIONS ON SITE. REFER TO COUNCIL FOR SCALED SURVEY PLAN.
- PULLING PITS PROVIDED AS REQUIRED. FINISH FLUSH WITH GRASS SURFACE. CONFIRM PIT LOCATIONS WITH COUNCIL PRIOR TO INSTALLATION. MINIMUM CLASS C 150 KN POINT LOADING.
- ELECTRICAL WORKS TO COMPLY WITH THE LATEST SERVICE AND INSTALLATION RULES OF NSW.
 - REMOVE SURGE SUPPRESSION AT THE MAIN SWITCHBOARD.
- ALL EXTERNAL CONDUITS INSTALLED BETWEEN GROUND LEVEL AND 3M ABOVE GROUND LEVEL THAT ARE IN PUBLIC AREAS SHALL BE GALVANIZED.
- EACH LIGHT FITTING TO BE WIRED SEPARATELY FROM THE BOTTOM OF THE POLE. DO NOT LOOP AT THE TOP.
- CONFIRM LOCATION OF NEW LIGHTING SWITCHBOARD WITH COUNCIL PRIOR TO INSTALLATION.
- MOTOKOLA PICCOLO XR OUTPUT VOLTAGE IS A DC PULSE THROUGH A TWO WIRE CIRCUIT SUITABLE FOR ACTIVATING DC LAMPING. CONFIRM DEFAULT OUTPUT VOLTAGE IS 12V.
 - RELAY NUMBERS ARE FOR GUIDANCE ONLY. CONFIRM PIN NUMBER AND OUTPUT WIRE COLOUR. PROVIDE INTERPOSING RELAYS IF REQUIRED. CONFIRM ALL DETAILS OF THE IRRINET SYSTEM (PICCOLO XR) PRIOR TO TENDER SUBMISSION.
 - REFER TO: CENTRATECH – CRAIG SIMPSON 0401 321 219 csimpson@centratotech.com.au
- PROVIDE PROWING FOR BOTH LED AND METAL HALIDE. SUBMIT SPILL CALCULATIONS FOR BOTH OPTIONS.
- ALL FLOODLIGHTING POLE COLUMN FOOTINGS SHALL EXCEED 200MM ABOVE FINISHED GROUND LEVEL. SURROUNDING ASSETS SHALL BE REINSTATEMENT AROUND THE PUNTH INCLUDING CONCRETE PAVING AND/OR GRASS. THE PUNTHS SHALL HAVE A SMOOTH SURFACE FINISH. CONFIRM PAD FOOTING PUNTH DETAILS WITH COUNCIL PRIOR TO CONSTRUCTION.
- SEAL ALL NEW CONDUITS THAT ENTER PITS WITH EXPANDING FOAM ON COMPLETION.
- ALL POLE BASPLATES OPENING TO GROUND SHALL BE SEALED WITH WATERPROOF GROUT AFTER POLE INSTALLATION.
- CONDUITS WITHIN POLES SHALL RISE TO A MINIMUM OF 200mm ABOVE FINISHED BASEPLATE LEVEL.
 - CONFIRM FOOTING CAGE DETAILS WITH POLE SUPPLIER.
- POLES INSTALLED WITH RAGBOLTS BELOW GROUND LEVEL SHALL BE PROVIDED WITH AN ADDITIONAL EPOXY COATING EQUAL TO DULUX DUREBLD STEEL TO A HEIGHT OF 100mm ABOVE FINISHED GROUND LEVEL. CONFIRM COLOUR PRIOR TO INSTALLATION.
- LOOPING TERMINATIONS WITHIN THE POLES SHALL BE ABOVE THE BOTTOM LEVEL OF THE ACCESS DOOR.
- TERMINALS SHALL NOT BE PROVIDED WITHIN THE TOP OF THE POLE.
- PROVIDE A VAPOUR SEAL BETWEEN THE INSIDE OF THE POLE AND THE LIGHT FITTING.
- CABAC KEV GLOVES SHALL BE INSTALLED ON ALL POLE SUBMAIN CABLES WITHIN THE POLES EXCLUDING EARTH.
- THE PATHWAY POLES ARE TO BE PROVIDED WITH THE FOLLOWING:
 - a. A 100MM PUNTH
 - b. AN ACCESS DOOR PROVIDING CLEAR ACCESS TO ALL COMPONENTS
 - c. CONFIRM ALL POLE FOOTING DETAILS WITH COUNCIL PRIOR TO CONSTRUCTION.
 - d. OUTREACH ARMS TO BE CAPABLE OF SUPPORTING 100KGS. CONFIRM DETAILS PRIOR TO CONSTRUCTION.



POLE SPACED 0.5M OFF THE PATHWAY

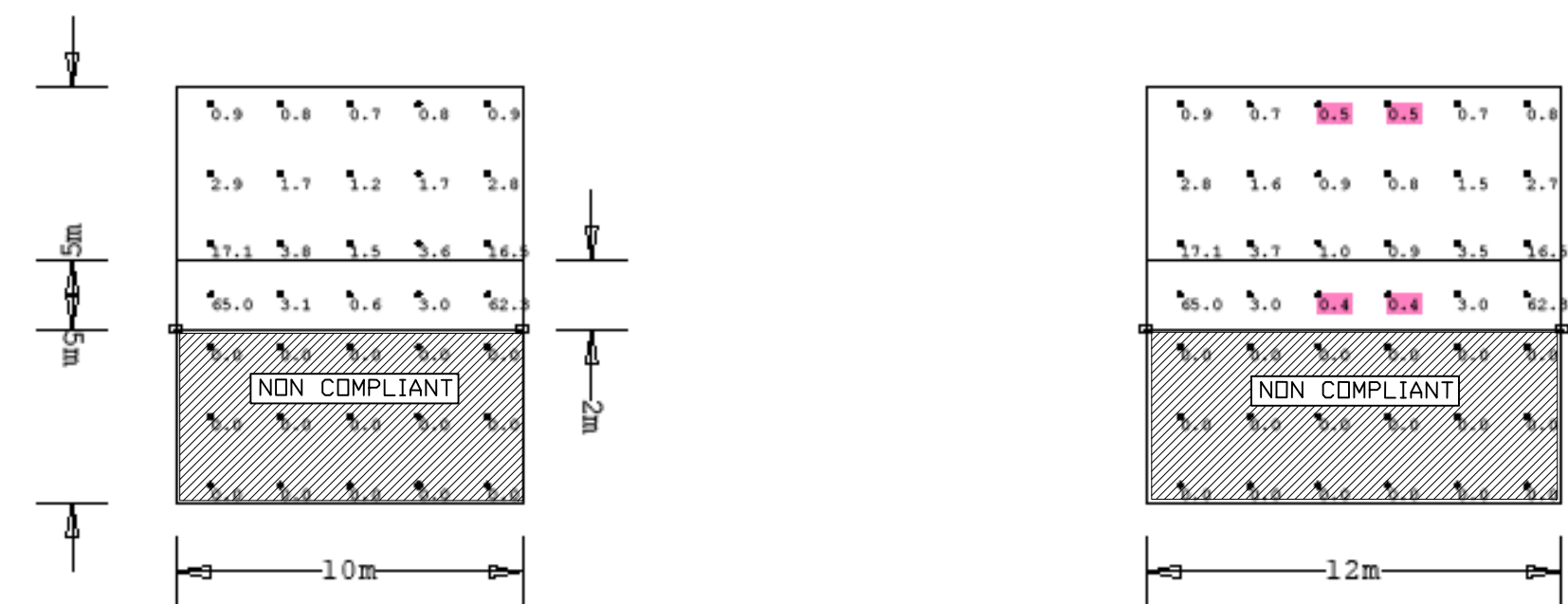
Calculation Summary							
Label	CalcType	Units	Avg	Max	Min	Min/Avg	Min/Max
PATH 20	Illuminance	Lux	14.50	31.4	7.4	0.51	0.24
PATH 20 2m	Illuminance	Lux	23.00	49.9	5.3	0.23	0.11
PATH 20 2m Vert E	Illuminance	Lux	14.26	38.6	0.5	0.04	0.01
PATH 20 2m Vert W	Illuminance	Lux	14.26	38.6	0.5	0.04	0.01
PATH 20 Vert E	Illuminance	Lux	11.83	38.6	0.5	0.04	0.01
PATH 20 Vert W	Illuminance	Lux	11.83	38.6	0.5	0.04	0.01

FULL COMPLIANCE TO AS1158.3.1 2020



FULL COMPLIANCE TO AS1158.3.1 2020

Calculation Summary							
Label	CalcType	Units	Avg	Max	Min	Min/Avg	Min/Max
Path	Illuminance	Lux	26.80	65.0	0.6	0.02	0.01
Path 12m	Illuminance	Lux	22.35	65.0	0.4	0.02	0.01
Path 12m Far	Illuminance	Lux	3.17	17.1	0.5	0.16	0.03
Path 12m Near	Illuminance	Lux	0.00	0.0	0.0	N.A.	N.A.
Path Far	Illuminance	Lux	3.79	17.1	0.7	0.18	0.04
Path Near	Illuminance	Lux	0.00	0.0	0.0	N.A.	N.A.



1. THE BOLLARD CANNOT PROVIDE CONFORMANCE OVER AN AREA OF 5M TO THE BOLLARD REAR SIDE OF THE PATHWAY.

C	02/06/20	Pathway update to AS1158.3.1 2020 PP3 4M MH + bollard non-compliance			CC
B	19/05/20	Pathway update to AS1158.3.1 2020 PP3 5M MH			CC
A	23/01/19	Tender issue.			CC
No.	DATE	Description			Drawn

GRA ELECTRICAL ENGINEERS
GARY ROBERTS & ASSOCIATES
PTY LTD ACN 064331086
PHONE (02) 9457 6485
MOBILE (0412) 442 671
E-mail: grassoc@optusnet.com.au

Client: CANADA BAY COUNCIL

Project: LYSAGHT PARK
SWANNELL AVENUE CHISWICK NSW 2046
2019 LIGHTING UPGRADE

Drawing

ELECTRICAL SERVICES
LIGHTING LAYOUT

Drawing No: 391E1 Issue: C

Date: 23/01/19 Drawn: C.C. Checked: 391 Proj.No: 1:500@AO Scale: